

Vanmac BV
Astronaut 40
3824 MJ AMERSFOORT
the Netherlands
T +31(0)33 456 44 32
F +31(0)33 456 44 33
Info@vanmac.nl
www.vanmac.nl

3-punts Verticuteer VCU200
VCU200

3-Punkt verticutier VCU200
VCU200

3-Point scarifier VCU200
VCU200



00.34-0101

Drawn 9/2/2009 1:25:00 PM	Sheet 1/3
Revised AVDB 3-5-2011	Revision A

40	2	KR.1481630	Holspie 6x30	Tightening Pin	Spannhülse	
39	2	KR.CL3EZ	Borgveer 3mm	Lock Spring	Sicherungsfeder	
38	1	KR.LP9568Z	Borgpen 9,5x68mm	Lock pin	Sicherungstift	
37	5	KR.LP9Z	Borgpen 9 mm	Lock pin	Sicherungstift	
36	2	KR.Z422281	Werktuigpen Ø22-Ø28	Pin	Stift	cat.1-2 c L=181
35	1	KR.Z319075	Topstangpen Ø19x76	Pin	Vorsteckbolzen	
33.2	1	KR.GN61180	Vetnippel M6 180°	Schmierkopf	Grease Nipple M6 180°	
33.1	1	KR.GRAE25NPPB	Binnenlager	Lager	Ring	
33	2	KR.GLCTE25	Lagerblok Cpl.	Ring Block	Lagergehäuse	
32	2	90.912820	Cil.Inbusbout M8x20	Cylinder Head Screw	Zylinderschraube	
31	2	90.916810	Inbus Stelbout M8x10	Inner Hex Bolt	Schraube	
30	1	90.68858740	Inlegspie 8x7x40	Parallel key	Passfeder	
29	1	90.688510830	Inlegspie 10x8x30	Parallel Key	Passfeder	
28	1	KR.GN61180	Vetnippel M6 180°	Grease Nipple M6 180°	Schmierkopf	
27	1	90.FCE207	Lagerblok Compl. SNR	Bearing block	Lagergehäuse	
26	1	42.30160	Kett.Wiel 3/4" 23t Ø35 SP10	Chain Sprocket	Kettenrolle	2x tapg.op Spie+90gr.
25	1	42.0350	Kettingspanner	Chain Tightener	Spannklotze	Vert.Unit Zijkant
24	1	42.00002	Spanbout Vert.Kettingsp.	Tensioning bolt	Spannbolzen	
23	1	KR.SWE341512	Spanwiel 3/4" 15t +lager 12m	Chain Tensionwheel	Spannrolle	
22.2	1	KR.VE60H	Verb.Schakel	Kettenglied	Closing Link	
22.1	1	KR.KE60H	Rollenketting Asa 60h	Rollenkette	Roller chain	990
22	1	90.ASA60H990	Rollenketting 3/4"KE60H L=990	Roller chain	Rollenkette	VCU120-150-200-240
21	1	34.03501	Tandwielkast 1:1	Gear box	Zahnradkasten	Tegenlopende assen
20	1	KR.820900	Beschermkap	Guard	Schutzhaube	
19	1	KR.190000484	Beschermhuls Affakassstomp	Guard	Schutzhaube	
15	2	34.01008	Pen D17 L=208	Pin	Stift	Gewichtenrek VCU200
14	1	34.01014	Beschermkap	Guard	Schützhaube	
13	1	34.01012	Aandrijfas 35mm met opsteekbus	Shaft	Welle	L=985mm
12	1	34.01013	Beschermkap aandrijfas VCU200	Guard	Schützhaube	
11	1	34.010112	Veiligheidsbeugel	Safety switch Brace	Sicherungsschalterhalterung	Strip
10	1	34.01006	Steunpoot	Jack	Stützfuss	
9	1	34.010120	Schraapkabel Ltot=2010mm	Scraper cable	Abstreiferkabel	6mm - 2x draadeind M
8	1	34.01005	Looprol 2.00m	Roller	Laufrollen	
7	2	34.01018	Hoogtemarkering	Roller jack	Walzenhöhereglung	
6	2	34.03002	Binnenkant Hoogteverstelling	Quick height adjustment	Schnellhöhe-einstellung	Universeel
5	2	34.03005	Spindel Hoogteverstelling	Spindle	Spinner	
4	2	34.03004	Hendel Hoogteverstelling	Lever	Hebel	
3	1	034.0101.09	Schoor LSM	Bracket	Verstrebung	
2	1	34.010110	3-punts frame	3-Point Linkage Frame	3-Punktsgestell	
1	1	34.01010	Frame 2.00m	Main frame	Hauptgestell	
Item	QTY	Reference	Omschrijving	Description	Benennung	Opmerking

Vanmac BV
Astronaut 40
3824 MJ AMERSFOORT
the Netherlands

T +31(0)33 456 44 32
F +31(0)33 456 44 33
Info@vanmac.nl
www.vanmac.nl

3-punts Verticuteer VCU200

VCU200

3-Punkt verticutier VCU200

VCU200

3-Point scarifier VCU200

VCU200



00.34-0101

Drawn 9/2/2009	1:25:00 PM	Sheet 2/3
Revised AVDB	3-5-2011	Revision A

99	0	34.01017	Zakje met breekbouten	Shearbolt	Scherbolzen	4x M8x45 8.8 + moer
91	4	44.03050	Gewicht Verticuteer a 25kg	Weight	Gewicht	
90	1	IT.1005	Documenthouder 125x345mm	Document Tube	Dokumenthalterung	Zwart/Zwart Schroefd
82	5	90.98516	Zelfborgende Moer M16	Self-locking Nut M16	Selbstsichernde Mutter	
81	10	90.125A16	Sluitring M16	Washer M16	Unterlegscheibe	
79	1	90.9311670	Zeskantbout M16x70	Hex.Bolt	Schraube	
78	4	90.9331650	Tapbout M16x50	Hex Bolt M16x50	Schraube	
75	2	90.98512	Zelfborgende Moer M12	Self-locking Nut	Selbstsichernde Mutter	
74	5	90.125A12	Sluitring M12	Washer M12	Unterlegscheibe	
73	1	90.127B12	Veerring M12	Spring Washer	Federring	
72	1	90.9331240	Tapbout M12x40	Hex Bolt M12x40	Schraube	
71	2	90.9331230	Tapbout M12x30	Hex Bolt	Schraube	
68	2	90.93410	Moer M10	Nut	Mutter	
67	10	90.98510	Zelfborgende Moer M10	Self-locking nut M10	Selbstsichernde Mutter M10	
66	6	90.9021A10	Carr.Ring M10	Washer M10	Unterlegscheibe	
65	15	90.125A10	Sluitring M10	Washer M10	Unterlegscheibe M10	
64	2	90.127B10	Veerring M10	Spring Washer M10	Federring M10	
63	2	90.734910	Carr.Ring M10 Dik	Washer M10	Unterlegscheibe	
61	4	90.93110130	Zeskantbout M10x130	Hex.Bolt	Schraube	20 in M-Bin
60	6	90.9331040	Tapbout M10x40	Hex Bolt	Schraube	
59	2	90.9331020	Tapbout M10x20	Tap Bolt M10x20	Schraube	
57	9	90.9858	Zelfborgende Moer M8	Self Locking Nut M8	Selbstsichernde Mutter M8	
56	7	90.9021A8	Carr.Ring M8	Washer M8	Unterlegscheibe	
55	12	90.125A8	Sluitring M8	Washer M8	Unterlegscheibe	
54	5	90.127B8	Veerring M8	Spring Washer M8	Federring	
53	1	90.931850	Zeskantbout M8x50	Hex.Bolt	Schraube	
52	4	90.933835	Tapbout M8x35	Bolt	Bolz	
51	2	90.933825	Tapbout M8x25	Hex Bolt	Schraube	
50	3	90.933816	Tapbout M8x16	Bolt M8x16	Schraube	
48	4	90.9856	Zelfborgende Moer M6	Lock Nut M6	Sicherungsmutter M6	
47	4	90.9021A6	Carr.Ring M6	Washer M6	Unterlegscheibe	Ø18x1.6 Gat Ø6 200 i
46	2	90.933616	Tapbout M6x16	Hex Bolt M6x16	Schraube	
45	2	90.933620	Tapbout M6x20	Hex Bolt M6x20	Schraube	0 -1
Item	QTY	Reference	Omschrijving	Description	Benennung	Opmerking

Vanmac BV
Astronaut 40
3824 MJ AMERSFOORT
the Netherlands

T +31(0)33 456 44 32
F +31(0)33 456 44 33
Info@vanmac.nl
www.vanmac.nl

3-punts Verticuteer VCU200

VCU200

3-Punkt verticutier VCU200

VCU200

3-Point scarifier VCU200

VCU200

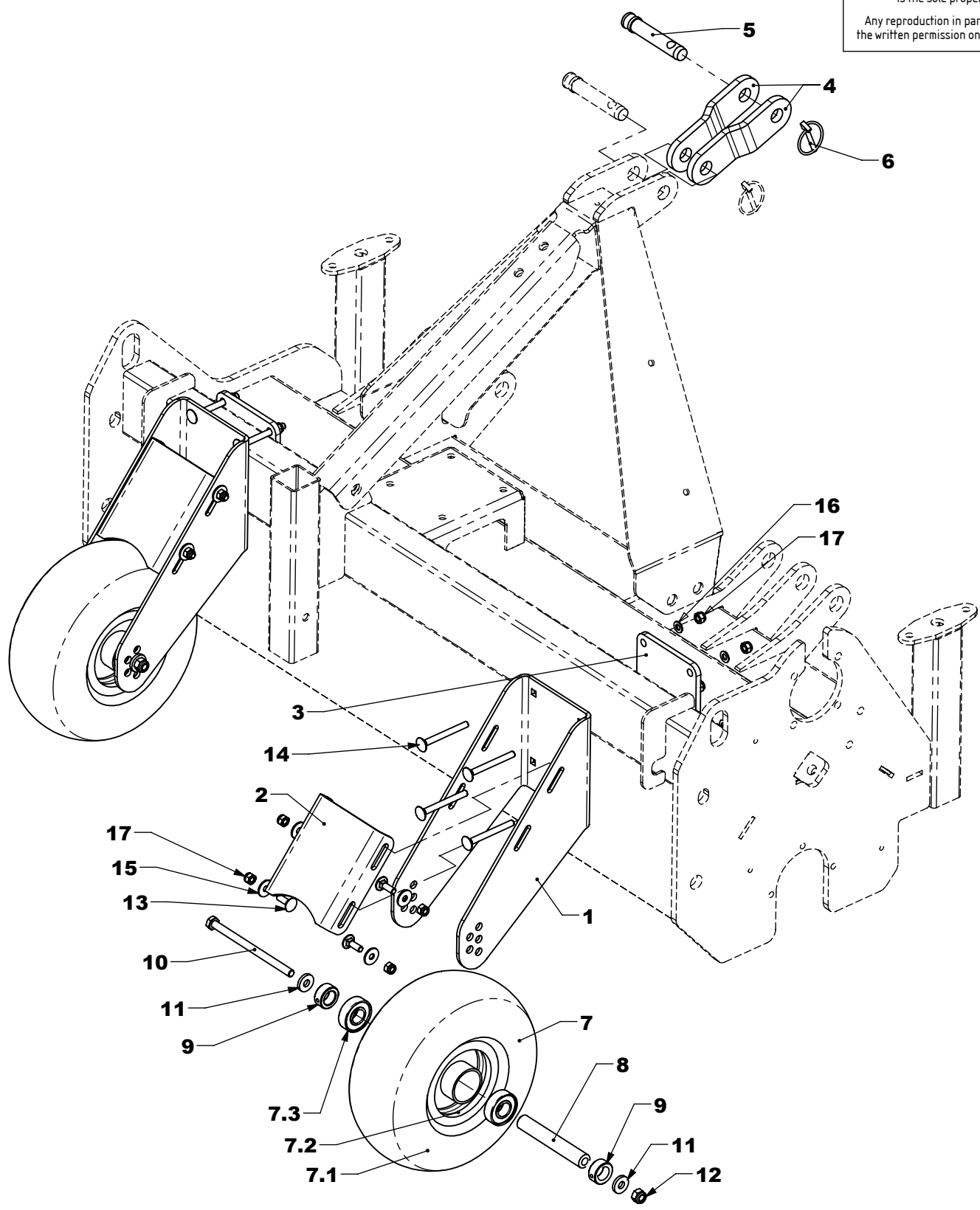


00.34-0101

Drawn 9/2/2009	1:25:00 PM	Sheet 3/3
Revised AVDB	3-5-2011	Revision A

034.0151.00 - ZRefl

PROPRIETARY AND CONFIDENTIAL
 The information contained in this drawing is the sole property of VANMAC bv.
 Any reproduction in part or as a whole without the written permission on VANMAC bv is prohibited.



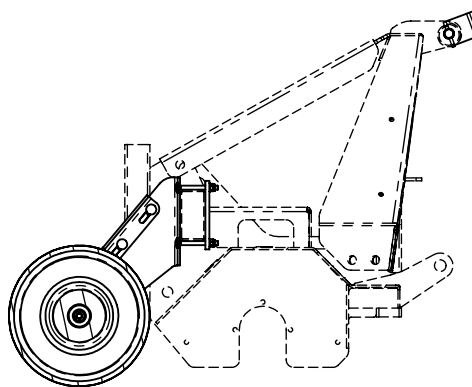
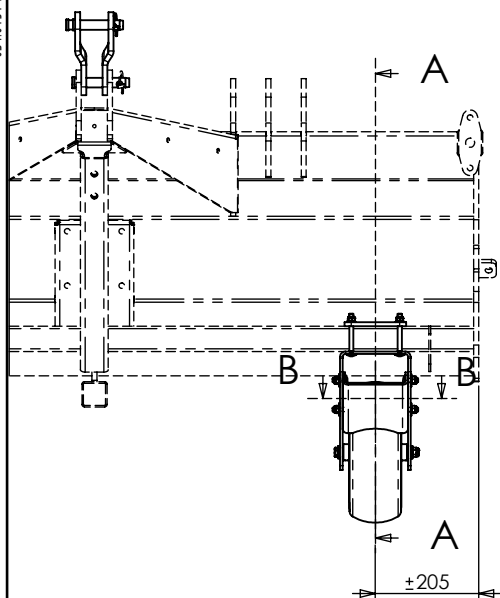
Vanmac BV
 Astronaut 40
 3824 MJ AMERSFOORT
 the Netherlands
 T +31(0)33 456 44 32
 F +31(0)33 456 44 33
 Info@vanmac.nl
 www.vanmac.nl

DO NOT SCALE DRAWING
 Tolerances unless stated:
 DIN 7168 - Middle Series
 Remove welding spatter
 Sheet metal unscratched
 Debur / Break sharp edges

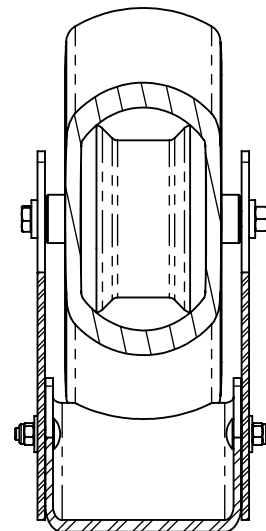
Undulatiekitt Verticuteerunits			
	Remarks	-	PGM
	Qty per Machine (1x per machine)	Weight	Scale
		kg	1:7.5

00.34-0151		
Drawn PCL	19-3-2010	Sheet 1/2
Revised	1-1-2000	Revision A

034.0151-00-ZRef



A-A



B-B (1 : 5)

99	1	34.50151	Verpakkingsmateriaal	Packaging	Verpackung	Und. kit
17	16	90.9858	Zelfborgende Moer M8	Self Locking Nut M8	Selbstsichernde Mutter M8	
16	8	90.125A8	Sluitring M8	Washer M8	Unterlegscheibe	
15	8	90.9021A8	Carr.Ring M8	Washer M8	Unterlegscheibe	
14	8	90.603880	Slotbout M8x80	Carriage Bolt	Flachrundschraube	
13	8	90.603825	Slotbout M8x25	Carriage Bolt	Flachrundschraube	
12	2	90.98510	Zelfborgende Moer M10	Self-locking nut M10	Selbstsichernde Mutter M10	
11	4	90.734910	Carr.Ring M10 Dik	Washer M10	Unterlegscheibe	
10	2	90.93110160	Zeskantbout M10x160	Hex.bolt	Schraube	
9	4	90.705A20V	Stelring 20x32x14	Adjustment ring	Stellring	
8	2	34.015105	Holle As	Axle	Achse	
7.3	2	KR.62042RS	Lager 6204-2RS	Lager	Bearing 6204-2rs	
7.2	1	MB.086500	Velg 3.00x5 20mm kola	Felge	Rim	
7.1	1	MB.058017	Buba 110x4.00-5 4pr	Reifen	Tyre	
7	2	34.015102	Wiel 11x4.00-5 Smooth	Wheel	Rad	Gaffelwiel met lager
6	1	KR.LP11Z	Borgclip 11mm	Lock Clip 11 Mm	Sicherungsfeder	
5	1	KR.Z319075	Topstangpen Ø19x76	Pin	Vorsteckbolzen	
4	2	34.015101	Link	Link	Verbindungsstrijpe	
3	2	34.015106	Montageplaat	Fixing plate	Festschraubplatte	
2	2	34.015104	Afschraper	Scraper	Abstreifer	
1	2	34.015103	Wielgaffel	Wheel Yoke	Radgabel	
Item	QTY	Reference	Omschrijving	Description	Benennung	Opmerking

Vanmac BV
Astronaut 40
3824 MJ AMERSFOORT
the Netherlands

T +31(0)33 456 44 32
F +31(0)33 456 44 33
Info@vanmac.nl
www.vanmac.nl

Undulatiekits Verticuteerunits

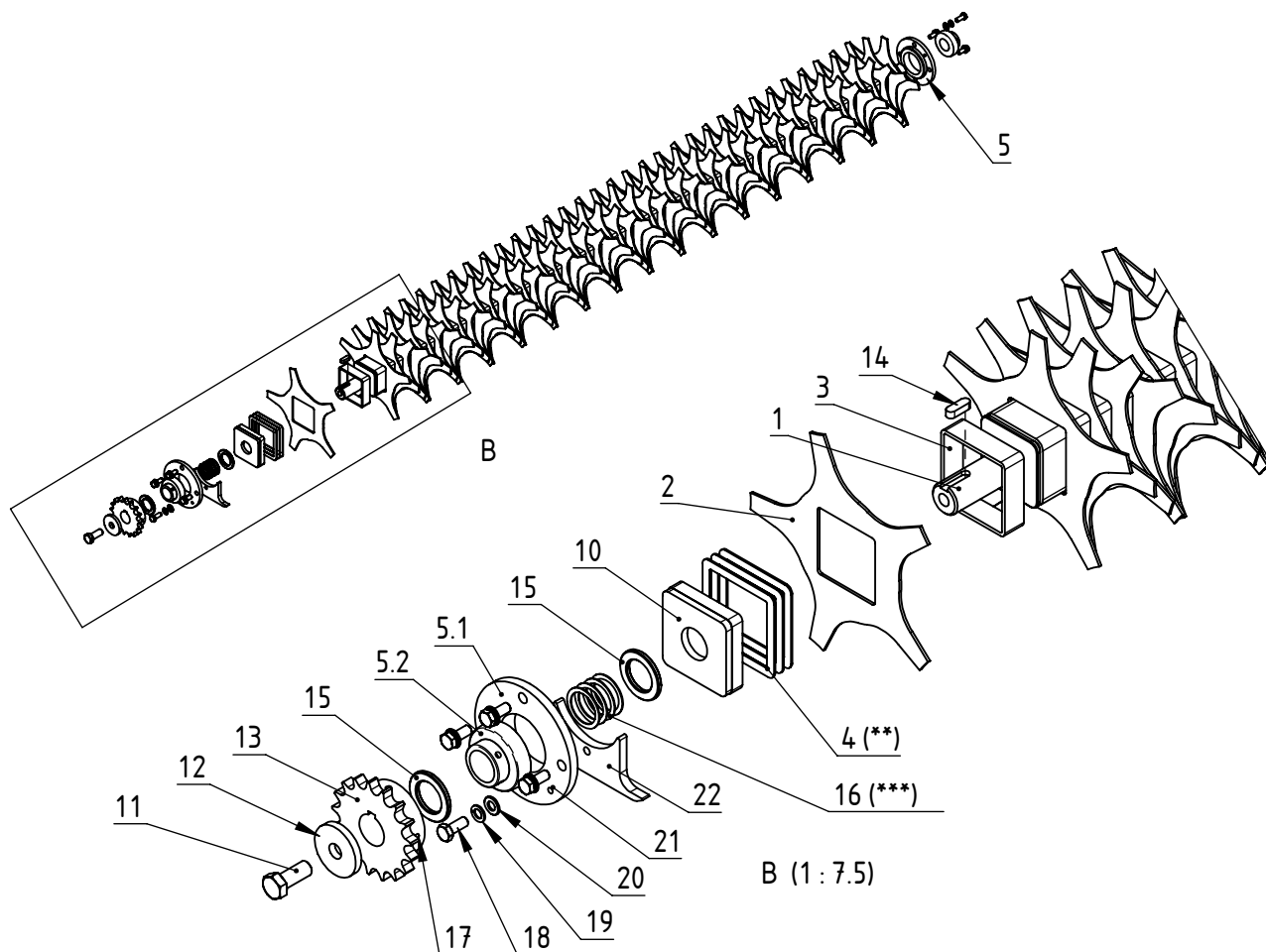
Bodenfolge Satz

Floatation Set

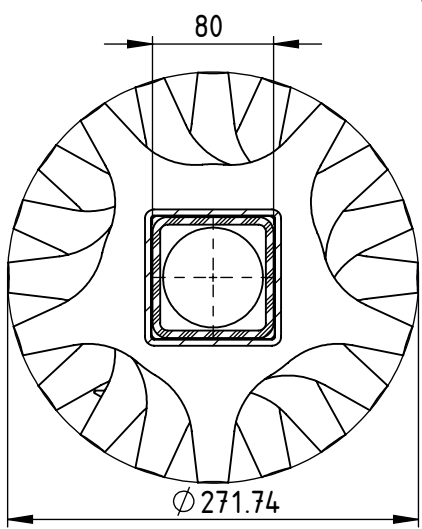


00.34-0151

Drawn PCL	19-3-2010	Sheet	2/2
Revised	-	Revision	A
	1-1-2000		

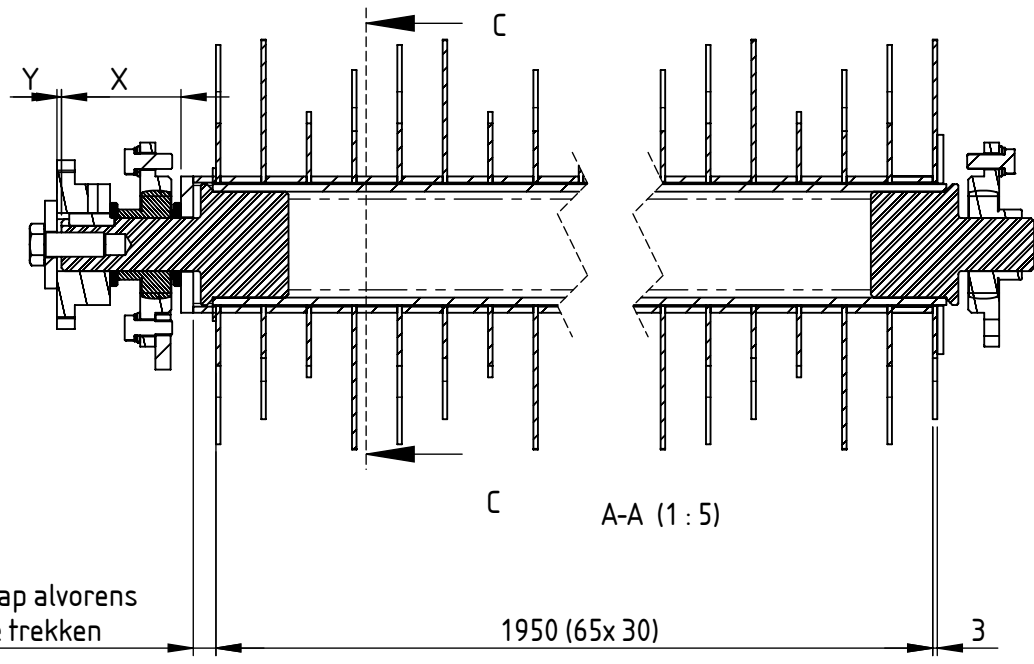


B (1 : 7.5)



C-C (1 : 5)

zorg voor voldoende overlap alvorens de samenstelling aan te trekken



A-A (1 : 5)

** : Kies aantal vulplaten (pos.4) zodanig dat maat X 80 tot 84mm bedraagt na opspannen.

*** : Kies daarna aantal shims (pos.16) zodanig dat maat Y 1 tot 3mm bedraagt na opspannen.

Vanmac BV
Astronaut 40
3824 MJ AMERSFOORT
the Netherlands
T +31(0)33 456 44 32
F +31(0)33 456 44 33
Info@vanmac.nl
www.vanmac.nl

Verticuteerwals 2000-30-Mn3
met vierkante as

Vertikutierwalze

Scarifier reel



00.34-0220

Drawn 9/25/2009 8:29:09 AM	Sheet 1/2
Revised TS 4/6/2010	Revision A

034.0220-00 - ZRef

REVISIONS

REV.	DESCRIPTION	DATE	APPROVED
-	Pos.11 was 90.79911640, pos.12 was 34.02024, pos.22 toegevoegd	06-04-10	TS

22	1	034.0202.05	Afdichtplaat	Seal strip	Dichtprofiel	
21	2	KR.GN61180	Vetnippel M6 180°	Grease Nipple M6 180°	Schmierkopf	
20	7	90.125a10	Sluitering M10	Washer M10	Unterlegscheibe M10	
19	7	90.127b10	Veerring M10	Spring Washer M10	Federring M10	
18	7	90.9331025	Tapbout M10x25	Tap Bolt M10x25	Schraube M10x25	
17	2	90.916820	Inbus Stelbout M8x20	Inner hex bolt	Schraube	
16	4	90.988354510	Opvulring 35x45x1.0	Shim	Distanzscheibe	
15	2	42.0152	Ring Ø55x35 - 5mm	Spacer 5mm	Abstandsrohr 5mm	
14	1	90.688510830	Inlegspie 10x8x30	Parallel Key	Passfeder	
13	1	42.30161	Ketting Wiel 3/4" 17t Ø35 Sp	Chain Sprocket	Kettenrolle	2xtapg M8(spie+90°).
12	1	05.02040	Schijf Ø58x8 - Ø17	Disk	Scheibe	
11	1	90.9331640	Tapbout M16x40	Hex Bolt	Schraube	
10	1	34.02021	Eindplaat	Plate	Blech	
6	2	34.02029	Vierkante Afstandsbus L=8	Spacer	Abstandsrohr	
5	2	90.FCE207	Lagerblok Compl. SNR	Bearing block	Lagergehuuse	
4	3	44.01007	vulplaat 100x100 L=2	Fill plate 2mm	Futter 2mm	vierkant gat 80x80
3	65	34.02027	Vierkante Afstandsbus L=27	Spacer	Abstandsrohr	
2	66	42.0110	Verticuteermes Ø270 Vierk 80	Scarifier Knife	Vertikutiermesser	
1	1	34.02025	As met eindplaat	Scarifier axle	Verticutierachse	VCU 200
Item	QTY	Reference	Omschrijving	Description	Benennung	Opmerking

Vanmac BV
Astronaut 40
3824 MJ AMERSFOORT
the Netherlands

T +31(0)33 456 44 32
F +31(0)33 456 44 33
Info@vanmac.nl
www.vanmac.nl

Verticuteerwals 2000-30-Mn3
met vierkante as

Vertikutierwalze

Scarifier reel



00.34-0220

Drawn 9/25/2009 8:29:09 AM	Sheet 2/2
Revised TS 4/6/2010	Revision A

1



2



3



4




5



6



Vanmac BV Astronaut 40 3824 MJ AMERSFOORT the Netherlands T +31(0)33 456 44 32 F +31(0)33 456 44 33 Info@vanmac.nl www.vanmac.nl	Stickerset VCU120 Universeel -		 00.50-2000	
	Aufklebersatz -	Decal set -	Drawn PCL 01-01-10	Sheet 1/2
		Revised PCL 23-03-10	Revision A	



7	1	15.50001	Typeplaat algemeen	Identification Plate	Kennschild	sticker 100 X 100
6	1	70.50020	Sticker - TRILO (m)	Decal TRILO {m}	Aufkleber TRILO {M}	Beeldmerk Zwart
5	1	50.20001	Sticker VCU120	Decal VCU120	Aufkleber VCU120	ZW/W 75x310mm
4	2	30.50020	Sticker - Danger Keep H&f Away	Decal - Danger Keep H&F Away	Aufkleber Danger Keep H&F Away	Pictogram Ge-zw
3	4	45.50060	Sticker - Hier Smeren	Decal "Greese Gun"	Aufkleber	Pictogram Geel/W
2	1	50.01003	STICKER 540 rpm	Decal 540 RPM	Aufkleber 540 Umdr/min	58x103mm
1	1	50.03000	Instructiesticker borstelmonde	Decal Brush Scarifier items	Aufkleber	175x100mm
Pos	QTY	Materiaal	Omschrijving NED	Omschrijving ENG	Omschrijving DUI	OMS2

Vanmac BV Astronaut 40 3824 MJ AMERSFOORT the Netherlands T +31(0)33 456 44 32 F +31(0)33 456 44 33 Info@vanmac.nl www.vanmac.nl	Stickerset VCU120 Universeel		TRILLO	
	Aufklebersatz		Decal set	
	-		-	
				00.50-2000
Drawn		PCL 01-01-10	Sheet 2/2	
Revised		PCL 23-03-10	Revision A	

1



2



3



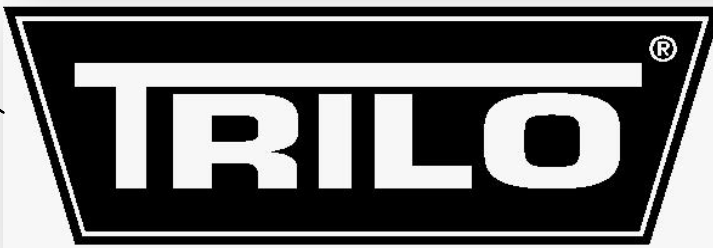
4




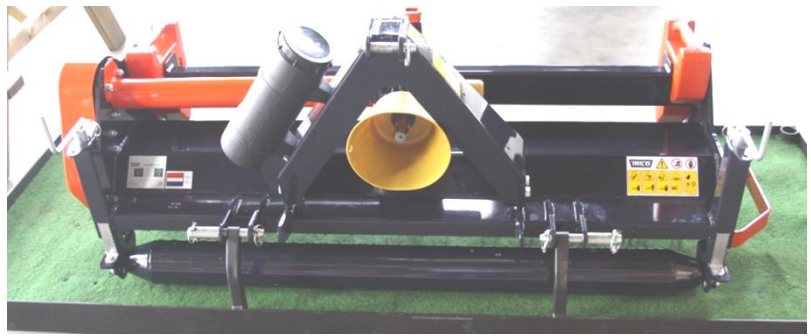
5



6



<p>Vanmac BV Astronaut 40 3824 MJ AMERSFOORT the Netherlands</p> <p>T +31(0)33 456 44 32 F +31(0)33 456 44 33 Info@vanmac.nl www.vanmac.nl</p>	<p>Stickerset VCU150 Universeel</p> <p>-</p>										
	<p>Aufklebersatz</p> <p>-</p>	<p>Decal set</p> <p>-</p>	<p>00.50-2001</p> <table border="1"> <tr> <td>Drawn</td> <td>PCL 01-01-10</td> <td>Sheet</td> <td>1/2</td> </tr> <tr> <td>Revised</td> <td>PCL 23-03-10</td> <td>Revision</td> <td>A</td> </tr> </table>		Drawn	PCL 01-01-10	Sheet	1/2	Revised	PCL 23-03-10	Revision
Drawn	PCL 01-01-10	Sheet	1/2								
Revised	PCL 23-03-10	Revision	A								



7	1	15.50001	Typeplaat algemeen	Identification Plate	Kennschild	sticker 100 X 100
6	1	70.50020	Sticker - TRILO (m)	Decal TRILO {m}	Aufkleber TRILO {M}	Beeldmerk Zwart
5	1	50.20002	Sticker VCU150	Decal VCU150	Aufkleber VCU150	ZW/W 75x310mm
4	2	30.50020	Sticker - Danger Keep H&F Away	Decal - Danger Keep H&F Away	Aufkleber Danger Keep H&F Away	Pictogram Gezw
3	4	45.50060	Sticker - Hier Smeren	Decal "Greese Gun"	Aufkleber	Pictogram Geel
2	1	50.01003	STICKER 540 rpm	Decal 540 RPM	Aufkleber 540 Umdr/min	58x103mm
1	1	50.03000	Instructiesticker borstelmonde	Decal Brush Scarifier items	Aufkleber	175x100mm
Pos	QTY	Materiaal	Omschrijving NED	Omschrijving ENG	Omschrijving DUI	OMS2

Vanmac BV Astronaut 40 3824 MJ AMERSFOORT the Netherlands T +31(0)33 456 44 32 F +31(0)33 456 44 33 Info@vanmac.nl www.vanmac.nl	Stickerset VCU150 Universeel		TRILO		
	Aufklebersatz		Decal set		
	-		-		
			00.50-2001		
Drawn		PCL 01-01-10	Sheet		2/2
Revised		PCL 23-03-10	Revision		A

1



2



3



4




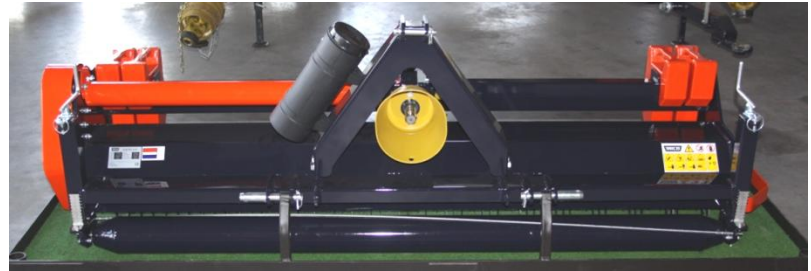
5



6



Vanmac BV Astronaut 40 3824 MJ AMERSFOORT the Netherlands T +31(0)33 456 44 32 F +31(0)33 456 44 33 Info@vanmac.nl www.vanmac.nl	Stickerset VCU200 Universeel -		 00.50-2002	
	Aufklebersatz -	Decal set -	Drawn PCL 01-01-10	Sheet 1/2
		Revised PCL 23-03-10	Revision A	



7	1	70.50020	Sticker - TRILO (m)	Decal TRILO {m}	Aufkleber TRILO {M}	Beeldmerk Zwa
6	1	15.50001	Typeplaat algemeen	Identification Plate	Kennschild	sticker 100 X 100
5	1	50.20003	Sticker VCU200			ZW/W 75x310mm
4	2	30.50020	Sticker - Danger Keep H&F Away	Decal - Danger Keep H&F Away	Aufkleber Danger Keep H&F Away	Pictogram Ge-zw
3	4	45.50060	Sticker - Hier Smeren	Decal "Greese Gun"	Aufkleber	Pictogram Geel/v
2	1	50.01003	STICKER 540 rpm	Decal 540 RPM	Aufkleber 540 Umdr/min	58x103mm
1	1	50.03000	Instructiesticker borstelmonde	Decal Brush Scarifier items	Aufkleber	175x100mm
Pos	QTY	Materiaal	Omschrijving NED	Omschrijving ENG	Omschrijving DUI	OMS2

Vanmac BV Astronaut 40 3824 MJ AMERSFOORT the Netherlands T +31(0)33 456 44 32 F +31(0)33 456 44 33 Info@vanmac.nl www.vanmac.nl	Stickerset VCU200 Universeel		TRILO	
	Aufklebersatz		Decal set	
	-		-	
		00.50-2002		
		Drawn	PCL 01-01-10	Sheet 2/2
		Revised	PCL 23-03-10	Revision A

1



2



3



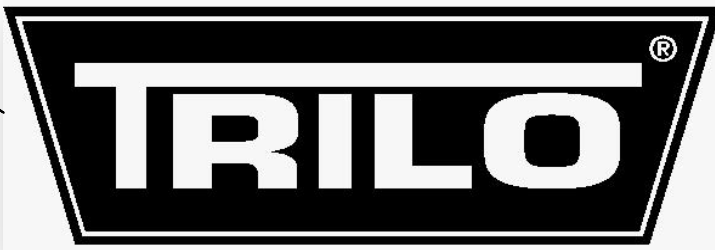
4



5



6



Vanmac BV
Astronaut 40
3824 MJ AMERSFOORT
the Netherlands
T +31(0)33 456 44 32
F +31(0)33 456 44 33
Info@vanmac.nl
www.vanmac.nl

Stickerset VCU200 Universeel

Aufklebersatz VCU240

Decal set VCU240




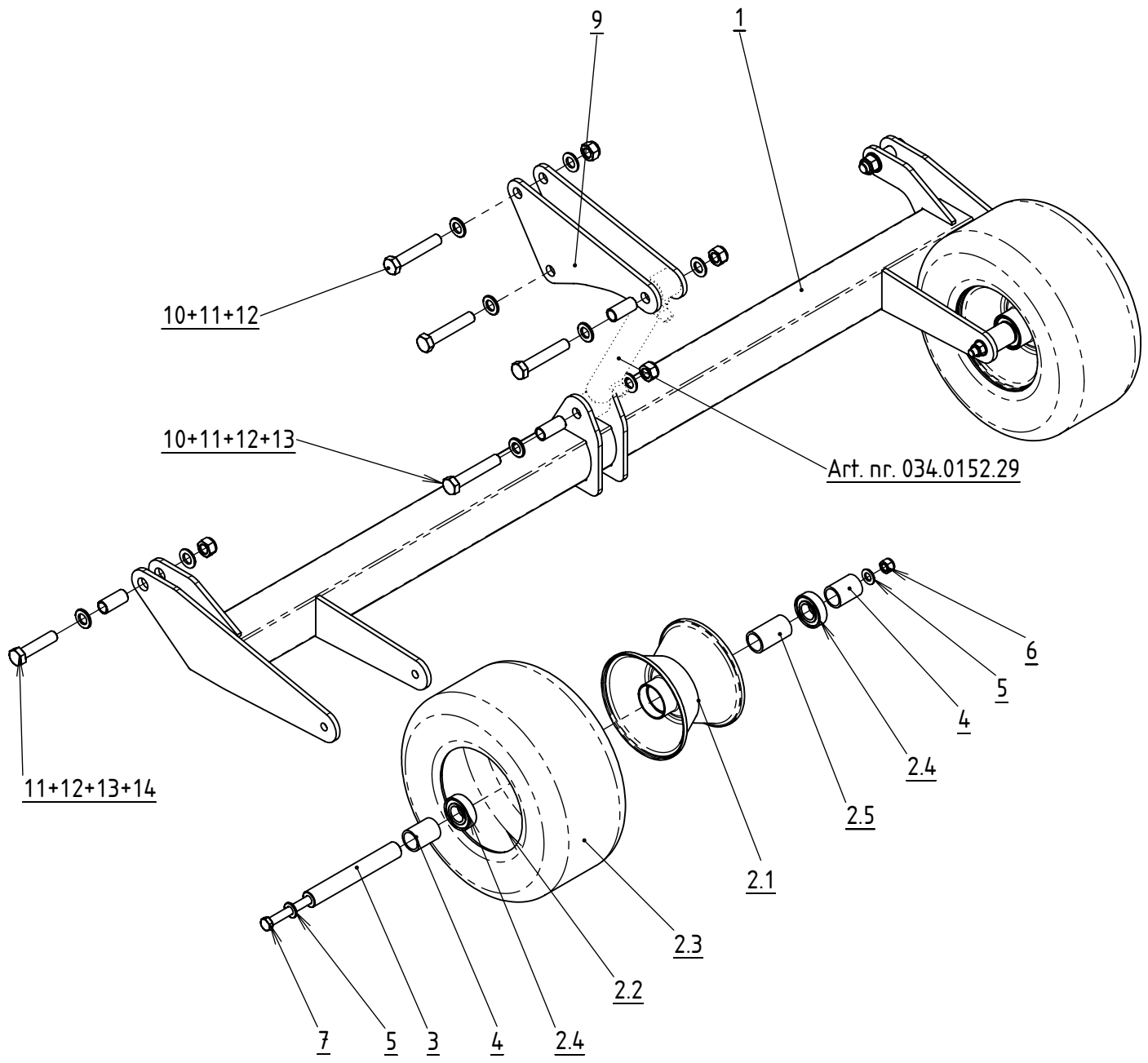
00.50-2003

Drawn PCL 01-01-10	Sheet 1/2
Revised PCL 23-03-10	Revision A



7	1	15.50001	Typeplaat algemeen	Identification Plate	Kennschild	sticker 100 X 100
6	1	70.50020	Sticker - TRILO (m)	Decal TRILO {m}	Aufkleber TRILO {M}	Beeldmerk Zwart
5	1	50.20004	Sticker VCU240	Decal VCU240	Aufkleber VCU240	ZW/W 75x310mm
4	2	30.50020	Sticker - Danger Keep H&f Away	Decal - Danger Keep H&F Away	Aufkleber Danger Keep H&F Away	Pictogram Geel
3	4	45.50060	Sticker - Hier Smeren	Decal "Greese Gun"	Aufkleber	Pictogram Geel
2	1	50.01003	STICKER 540 rpm	Decal 540 RPM	Aufkleber 540 Umdr/min	58x103mm
1	1	50.03000	Instructiesticker borstelmonde	Decal Brush Scarifier items	Aufkleber	175x100mm
Pos	QTY	Materiaal	Omschrijving NED	Omschrijving ENG	Omschrijving DUI	OMS2

Vanmac BV Astronaut 40 3824 MJ AMERSFOORT the Netherlands T +31(0)33 456 44 32 F +31(0)33 456 44 33 Info@vanmac.nl www.vanmac.nl	Stickerset VCU200 Universeel		 00.50-2003	
	Aufklebersatz VCU240	Decal set VCU240		
	-	-	Drawn PCL 01-01-10	Sheet 2/2
-	-	Revised PCL 23-03-10	Revision A	



Vanmac BV
 Astronaut 40
 3824 MJ AMERSFOORT
 the Netherlands

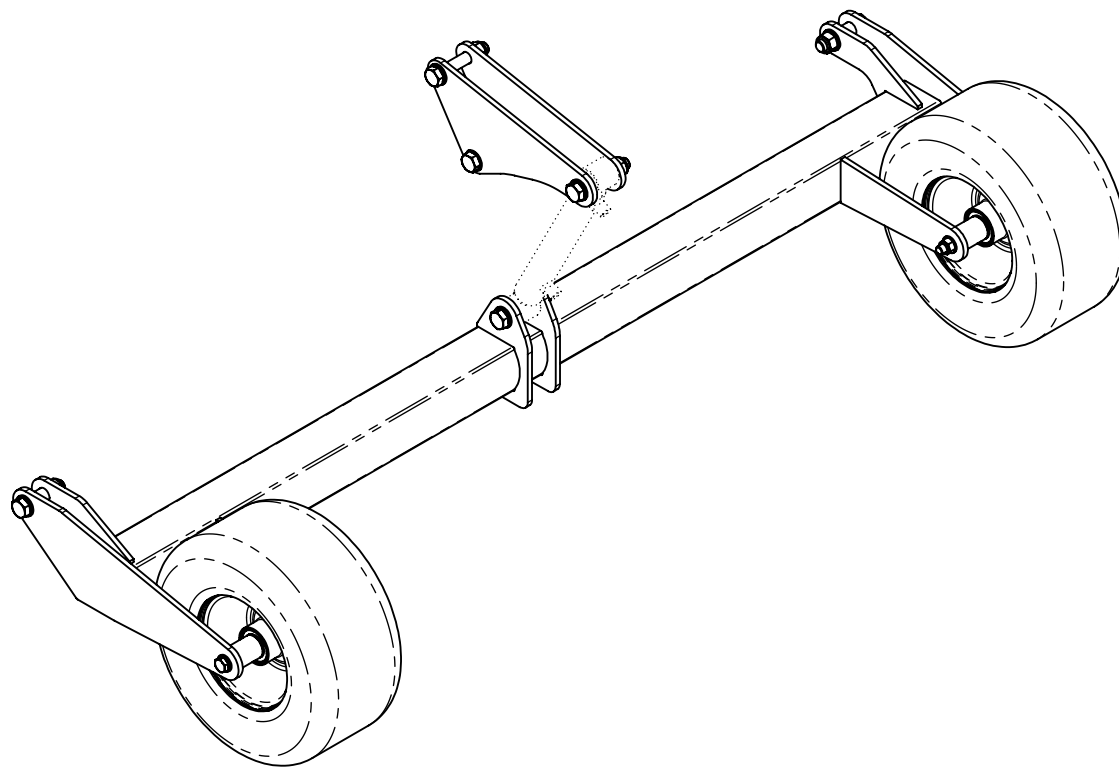
 T +31(0)33 456 44 32
 F +31(0)33 456 44 33
 Info@vanmac.nl
 www.vanmac.nl

Wielstel

Radsatz

Wheel Set

TRILO	
034.0152	
Drawn AVDB 13-1-2011	Sheet 1/2
Revised - 1-1-2000	Revision -



14	2	90.9311670	Zeskantbout M16x70	Hex.Bolt	Schraube	
13	4	034.0152.21	Buis	Pipe	Rohr	
12	6	90.98516	Zelfborgende Moer M16	Self-locking Nut M16	Selbstsichernde Mutter	
11	12	90.125A16	Sluitring M16	Washer M16	Unterlegscheibe	
10	4	90.9311690	Zeskantbout M16x90	Hex.Bolt M16x90	Schraube	
9	2	034.0152.18	Plaat	Plate	Blech	
7	2	90.93112220	Zeskantbout M12x220	Hex.bolt	Schraube	
6	2	90.98512	Zelfborgende Moer M12	Self-locking Nut	Selbstsichernde Mutter	
5	4	90.125A12	Sluitring M12	Washer M12	Unterlegscheibe	
4	4	19.11032	Bus Ø33.7x3.25 L=45	Bush	Buchse	
3	2	003.0701.01	Wielas 25mm L=180	Axle	Radachse	
2.5	1	19.11033	Bus Ø33.7x3.25 L=59	Buchse	Bush	
2.4	2	KR.62052RS	Lager 6205-2RS	Lager	Bearing 6205-2rs	
2.3	1	AB.B0606034	Buitenband 13x6.50-6/4pr Blok	Reifen	Tyre	
2.2	1	AB.T060600	Binnenband 13x6.50-6tr13	Luftschlauch	Inner Tube	
2.1	1	AB.W060401	Velg 4.50x6/kola25	Felge 4.50x6/kola25	Rim 4.50x6/kola25	
2	2	07.05011	Gaffelwiel+band 13x6.50-6/4pr	Wheel 13x6.50-6/4pr complete f	Gabel	Lijnprofiel
1	1	034.0152.31	Wielstel LSM	Wheel set	Radsatz	
Item	QTY	Reference	Omschrijving	Description	Benennung	Opmerking

Vanmac BV
Astronaut 40
3824 MJ AMERSFOORT
the Netherlands

T +31(0)33 456 44 32
F +31(0)33 456 44 33
Info@vanmac.nl
www.vanmac.nl

Wielstel

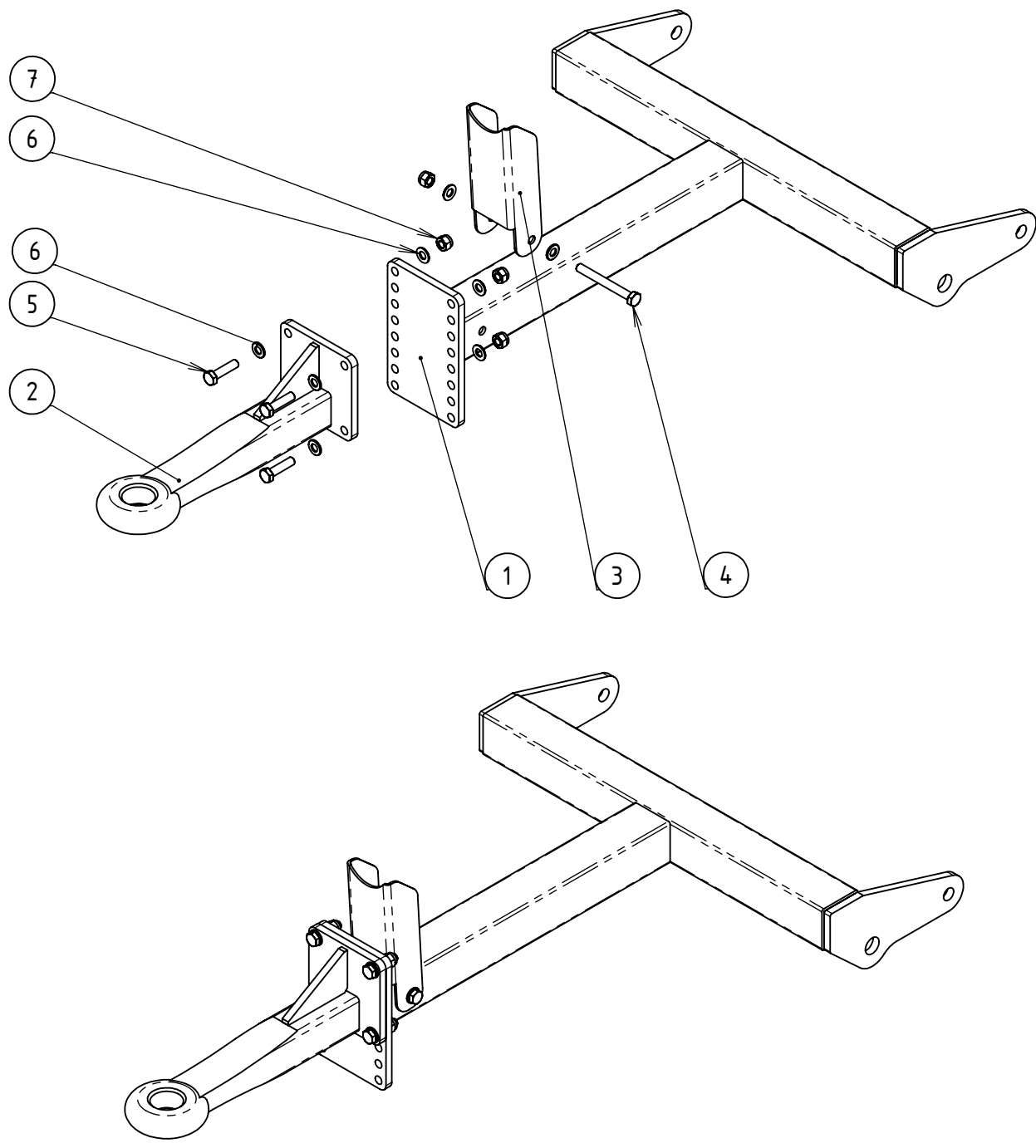
Radsatz

Wheel Set



034.0152

Drawn AVDB 13-1-2011	Sheet 2/2
Revised - 1-1-2000	Revision -



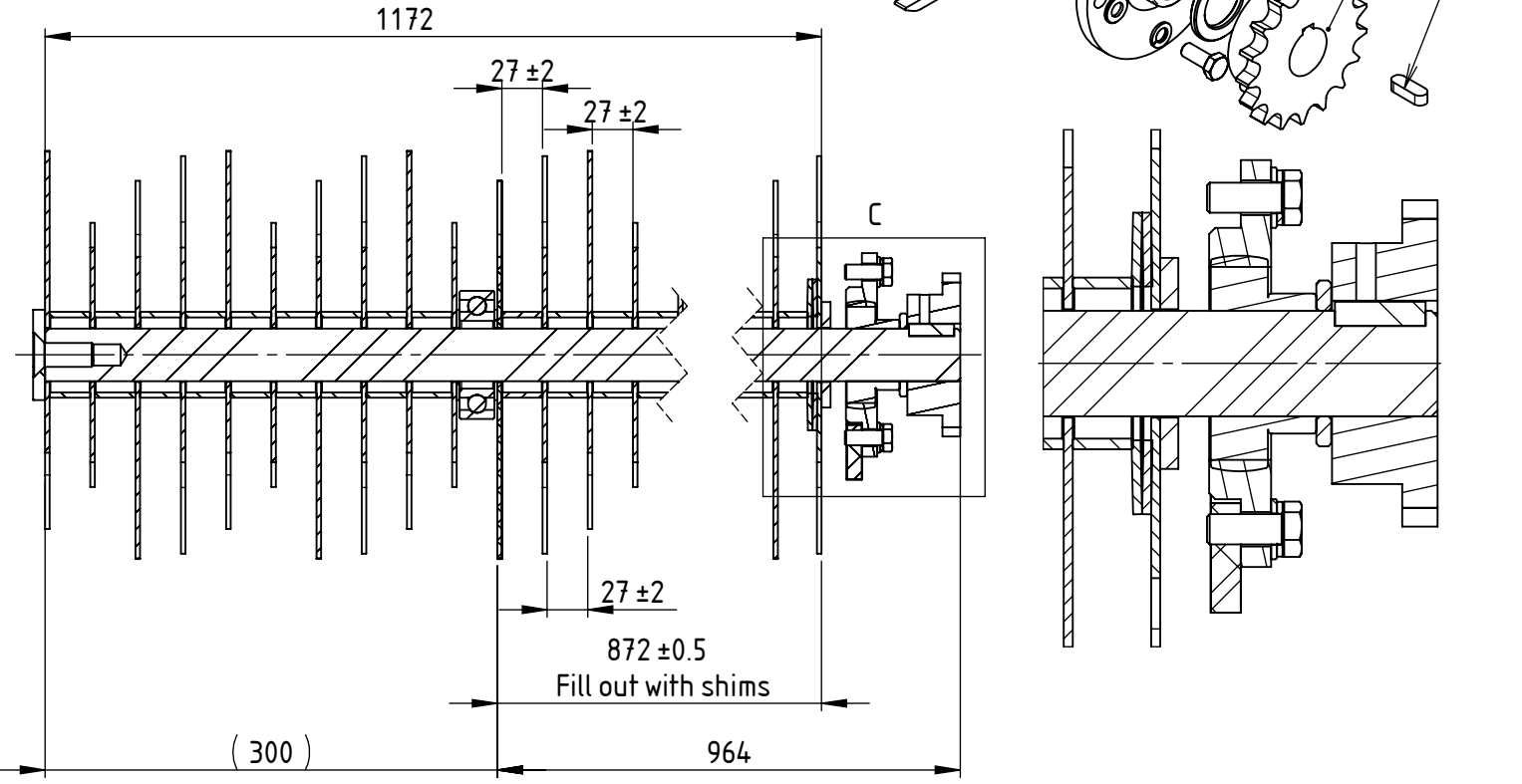
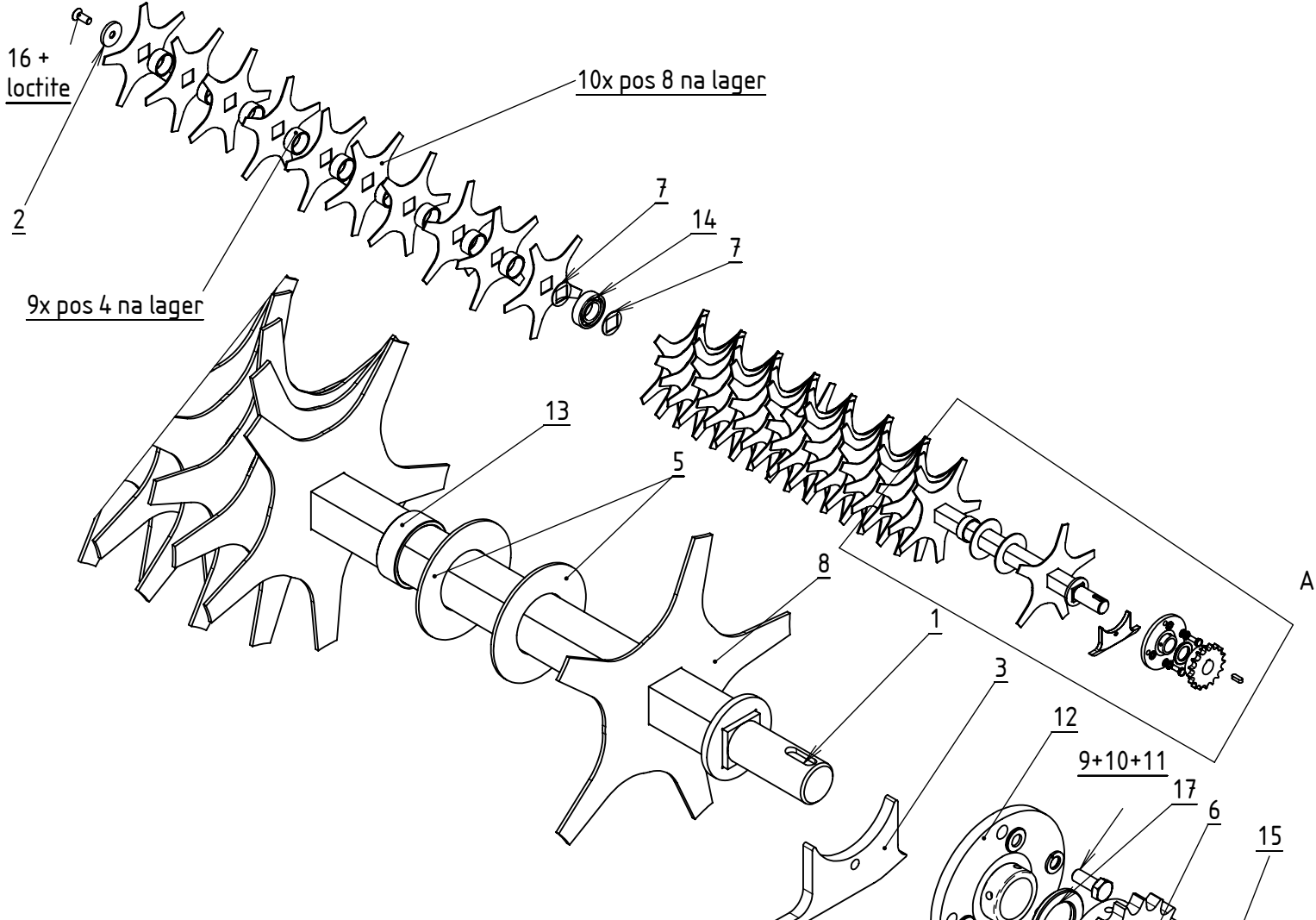
7	5	90.98510	Zelfborgende Moer M10	Self-locking nut M10	Selbstsichernde Mutter M10	
6	10	90.125A10	Sluitring M10	Washer M10	Unterlegscheibe M10	
5	4	90.9331040	Tapbout M10x40	Hex Bolt	Schraube	
4	1	90.9311090	Zeskantbout M10x90	Hex Bolt	Schraube	
3	1	034.0152.39	Steun affakas	Pto support	Zapfwellehalter	
2	1	034.0153.07	Trekhaak Vast Oog	Hitch	Zugdeichsel	
1	1	034.0153.03	Trekboom	Drawbar	Zugdeichsel	
Item	QTY	Reference	Omschrijving	Description	Benennung	Opmerking

Vanmac BV
 Astronaut 40
 3824 MJ AMERSFOORT
 the Netherlands
 T +31(0)33 456 44 32
 F +31(0)33 456 44 33
 Info@vanmac.nl
 www.vanmac.nl

Trekboom Compleet	
Zugdeichsel Völlig	Drawbar Complete

TRILO		
034.0153		
Drawn AVDB	4-5-2011	Sheet 1/1
Revised -	1-1-2000	Revision -

Blanco pagina - Blank page - Leerseite



Vanmac BV
 Astronaut 40
 3824 MJ AMERSFOORT
 the Netherlands

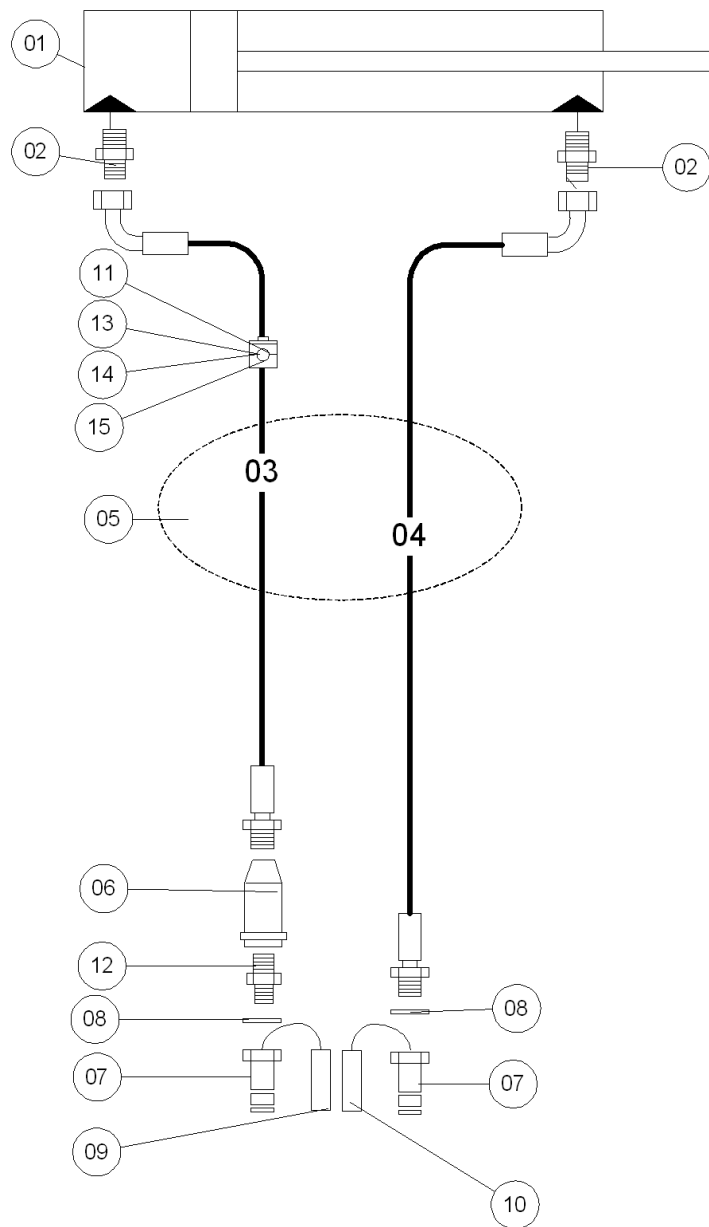
T +31(0)33 456 44 32
 F +31(0)33 456 44 33
 Info@vanmac.nl
 www.vanmac.nl

Verticuteerwals 2400-30-Mn3
 Deelbare as

Vertikutierwalze 2400-30-Mn3

Scarifier reel 2400-30-Mn3

TRILO	
034.0232	
Drawn AVDB 24-5-2011	Sheet 1/2
Revised - 1-1-2000	Revision -

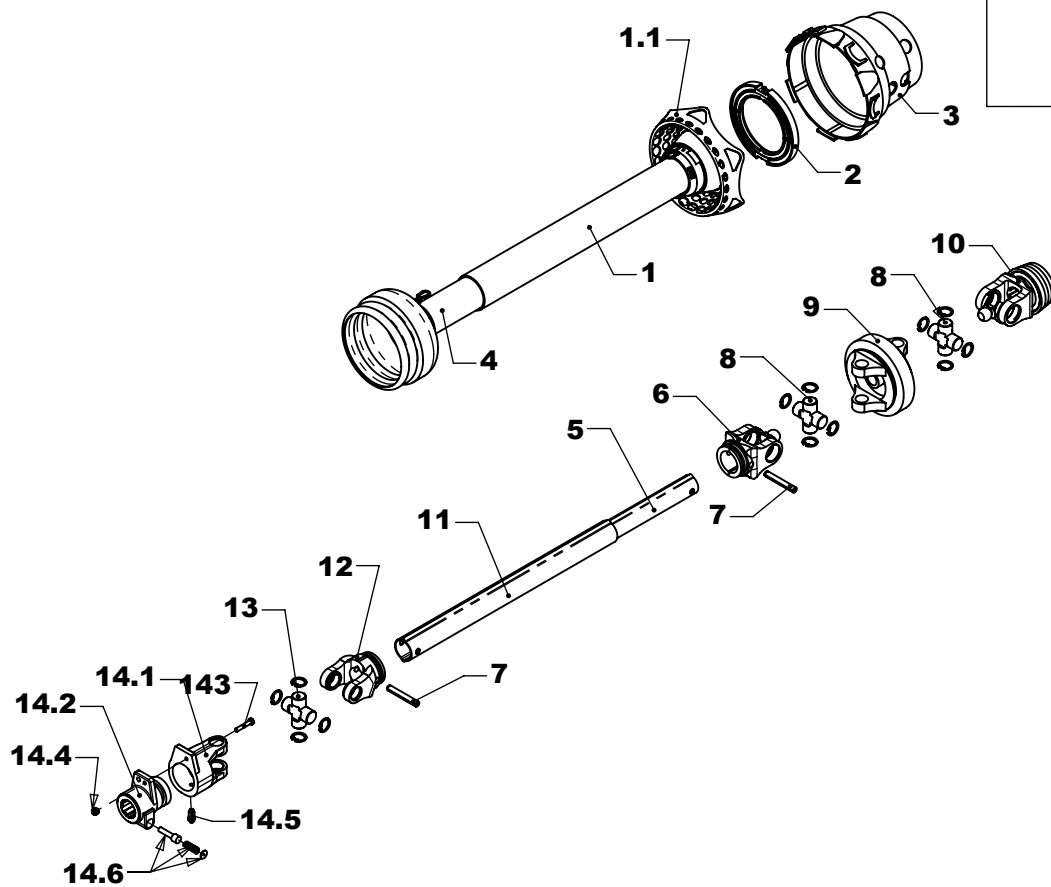


15	1	90.931635	Zeskantbout M6x35	Hex.Bolt	Schraube	
14	2	90.125A6	Sluitring M6	Washer M6	Unterlegscheibe	
13	1	90.9856	Zelfborgende Moer M6	Lock Nut M6	Sicherungsmutter M6	
12	1	KR.VNB0804	Nippel 1/2 X 1/4 BSP	Nipple 1/2 X 1/4 BSP	Nippel 1/2 X 1/4 BSP	
11	2	FL.0806226	Pijpklem Lng 212.7/12.7 Pa	Clamp	Klemmstück	
10	1	WF.TF12R	Stofkap 1/2" Rood	Hydr.Cover 1/2" Red	Staubschutzkappe	
9	1	WF.TF12G	Stofkap 1/2" Groen	Hydr.Cover 1/2" Green	Staubschutzkappe	
8	2	KR.TT08	USIT-ring 1/2"	Seal ring	Dichtungsring	
7	2	KR.20108110	Snelkoppelinstecker 1/2"	Plug 1/2"	Schnellkupplung	
6	1	KR.FBMB03001	Smoring 1/4"	Throttle valve	Drosselventil	FPMB 03 S 04 D
5	1	40.25050	beschermkous L 2000	Protective Sleeve	Schützüberzug	grootte 2 (D33)
4	1	034.2400.02	Slang NST6 L= 2520	Hydraulic hose	Hydraulischlauch	PN 6-8 PGL0 6-18-9
3	1	034.2400.01	Slang NST6 L= 2250	Hydraulic hose	Hydraulischlauch	PN 6-8 PGL0 6-18-9
2	2	KR.GES12LR14	Rechte Inschroefkoppeling BSP	Screw-in joint	Einschraubenippel	
1	1	034.0152.29	Cilinder D20-40-170/321	Ram	Zilinder	
Item	QTY	Reference	Omschrijving	Description	Benennung	Opmerking

Vanmac BV
 Astronaut 40
 3824 MJ AMERSFOORT
 the Netherlands
 T +31(0)33 456 44 32
 F +31(0)33 456 44 33
 Info@vanmac.nl
 www.vanmac.nl

Hydrauliek getrokken VCU	
Hydraulische Anlage VCU	Hydraulic Schematic VCU

TRILO	
034.2400	
Drawn AVDB 14-1-2011	Sheet 1/1
Revised - 1-1-2000	Revision -



14.6	1	KR.AG101	Drukstift Aftakas	Druckfeder	Quick Disconnect Pin	
14.5	1	KR.6005100	Vetnippel Borgstift M10kb61/20	Schmierkopf	Grease Nipple M10	
14.4	1	90.9858	Zelfborgende Moer M8	Selbstsichernde Mutter M8	Self Locking Nut M8	
14.3	1	90.931840109	Zeskantbout M8x40 10.9	Bolzen	Bolt M8x40 10.9	
14.2	1	KR.571709	Naaf K61/1 1-3/8 M6/8 R42	Nabe	Hub	
14.1	1	KR.206702	Gaffel breekbout M8 R42 W2200	Gabel	Yoke	
14	1	KR.5711312	Breekboutkopp. W2200 KB61/1	Shear bolt clutch	Scherbolzenkupplung	W2200
13	1	KR.200000	Kruisstuk	Joint Cross	Kreuzgarnitur	W2200
12	1	KR.201200	Gaffel voor buis 1	Yoke	Gabel	W2200
11	1	KR.751500	Profielbuis 1 2900 mm	Profiled Tube	Profilrohr	48 x 41 x 3
10	1	KR.2083810	Gaffel QS 1-3/8-6dlg grooth.	Yoke	Gabel	W2280
9	1	KR.209105	Dubbelgaffel groothoek 80°	Flanged Yoke	Flanschgabel	W2280
8	2	KR.200600	Kruisstuk	Joint Cross	Kreuzgarnitur	W2280
7	2	KR.14811070	Holspie 10x70	Tightening pin	Spannhülse	
6	1	KR.2011810	Groothoekgaffel OV	Yoke	Gabel	W2280
5	1	KR.751100	Profielbuis OV 2900 mm	Profiled Tube	Profilrohr	40 x 34,5 x 4
4	1	KR.SD151000I	Afscherming 1000 bi-buis	Guard	Schutzhaube	W2200 / W2300
3	1	KR.850100	Beschermkap SD15-2280 FLEXO	Guard	Schutzhaube	W2280
2	1	KR.828312	Glijring SD05/15	Sliding Ring	Gleitring	W2280
1.1	1	KR.851562	Beschermkap Flexo Element	Flexo Element	Flexo Element	
1	1	IN.01-030139	Halve afsch. Groothoek FLEXO A	Wide Angle	Weitwinkel	W2280 / W2380
Item	QTY	Reference	Omschrijving	Description	Benennung	Opmerking

Trilo BV
Astronaut 40
3824 MJ AMERSFOORT
the Netherlands

Aftakas WWE2280-1010-K61/1
Met Breekbout M8x40 10.9



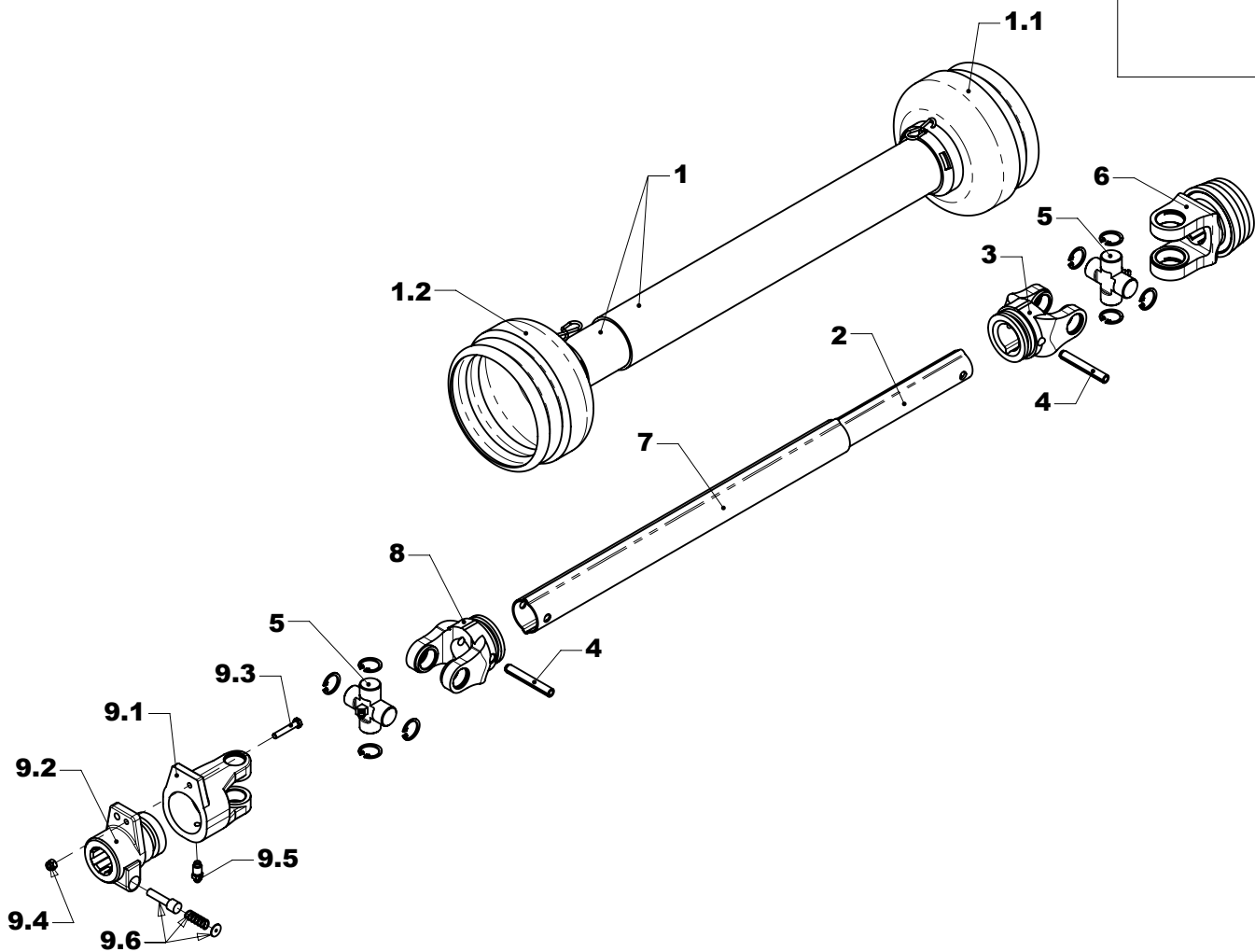
Gelenkwelle

Pto drive shaft

IN.01-030128

Tel +31(0)33 456 44 32
Fax +31(0)33 456 44 33
E-mail: Info@trilo.com
www.trilo.com

Sheet: 1/1 DWG1001.0301-D 28



9.6	1	KR.AG101	Drukstift Aftakas	Druckfeder	Quick Disconnect Pin	
9.5	1	KR.6005100	Vetnippel Borgstift M10kb61/20	Schmierkopf	Grease Nipple M10	
9.4	1	90.9858	Zelfborgende Moer M8	Selbstsichernde Mutter M8	Self Locking Nut M8	
9.3	1	90.931840109	Zeskantbout M8x40 10.9	Bolzen	Bolt M8x40 10.9	
9.2	1	KR.571709	Naaf K61/1 1-3/8 M6/8 R42	Nabe	Hub	
9.1	1	KR.206702	Gaffel breekbout M8 R42 W2200	Gabel	Yoke	
9	1	KR.5711312	Breekboutkopp. W2200 KB61/1	Shear bolt clutch	Scherbolzenkupplung	W2200
8	1	KR.201200	Gaffel voor buis 1	Yoke	Gabel	W2200
7	1	KR.751500	Profielbuis 1 2900 mm	Profiled Tube	Profilrohr	48 x 41 x 3
6	2	KR.208300	Gaffel QS 1-3/8-6dlg	Yoke	Gabel	W2200
5	2	KR.200000	Kruisstuk	Joint Cross	Kreuzgarnitur	W2200
4	2	KR.1481850	Holspie 8x50	Tightening Pin	Spannhülse	
3	1	KR.201100	Gaffel voor buis 0v	Yoke	Gabel	W2200
2	1	KR.751100	Profielbuis 0V 2900 mm	Profiled Tube	Profilrohr	40 x 34,5 x 4
1.2	1	KR.SD151000I	Afscherming 1000 bi-buis	Schutzhaube	Guard	
1.1	1	KR.SD151000A	Afscherming 1000 bu-buis	Schutzhaube	Guard	
1	1	KR.SD151000	Afscherming Cpl.	Guard	Gelenkwelleschutzrohr	W2200 / W2300
Item	QTY	Reference	Omschrijving	Description	Benennung	Opmerking

Trilo BV
Astronaut 40
3824 MJ AMERSFOORT
the Netherlands

Tel +31(0)33 456 44 32
Fax +31(0)33 456 44 33
E-mail: Info@trilo.com
www.trilo.com

Aftakas W2200-710-K61/1
Met Breekboutgaffel M8x40 10.9

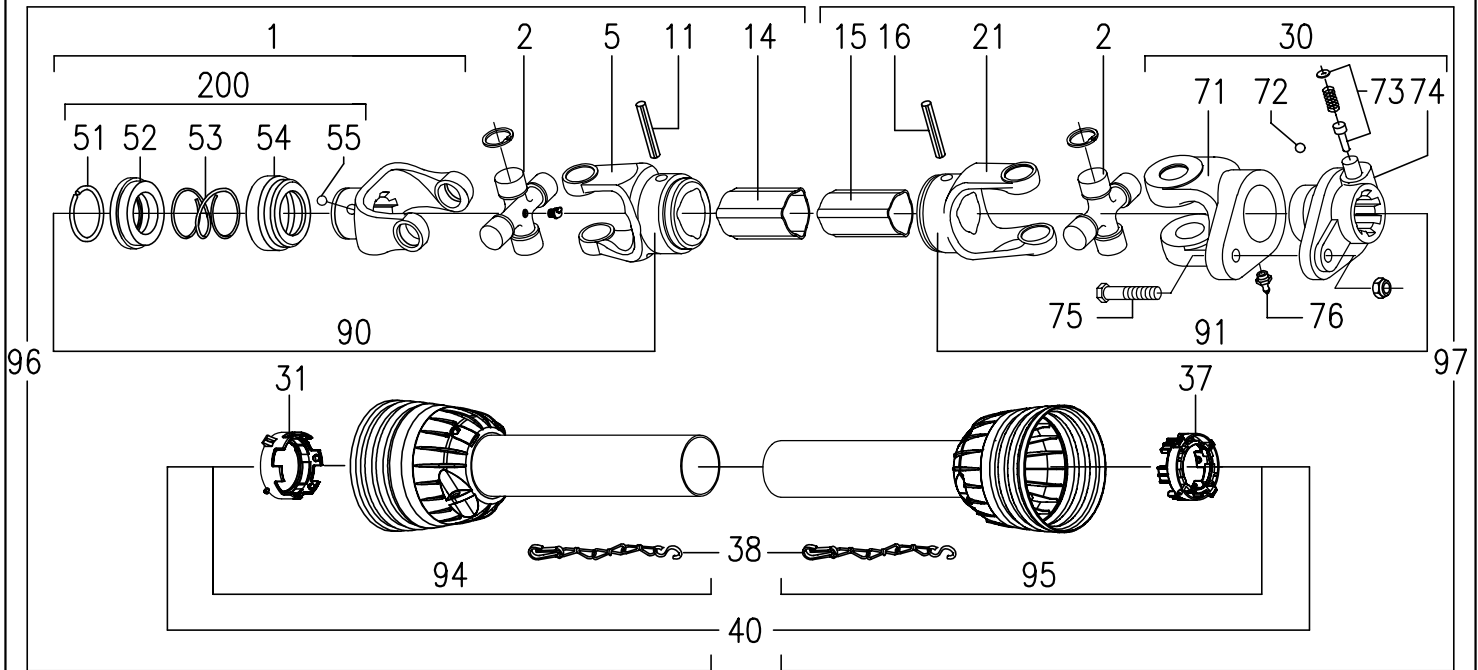
SG400 - SG450 1.50 Brush

PTO Shear Bolt Clutch



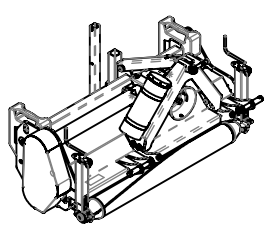
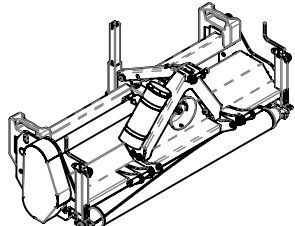
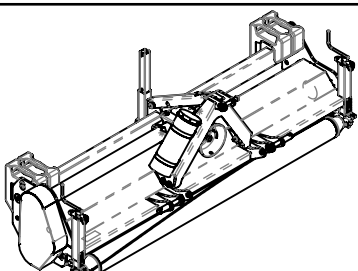
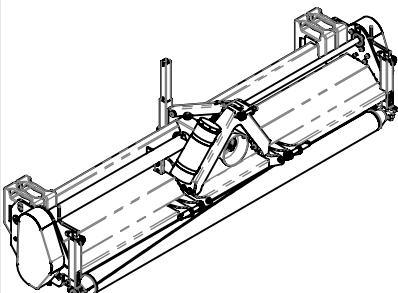
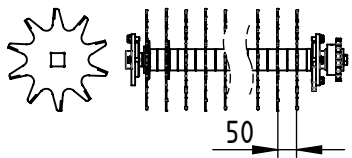
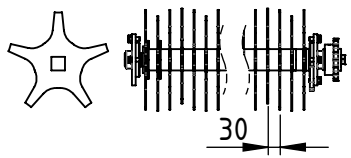
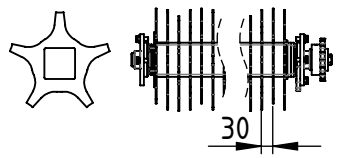
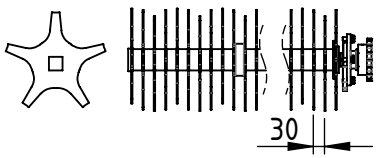
IN.01-03016

Sheet: 1/1 Dwg: I001.0301-D 6

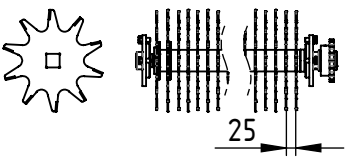
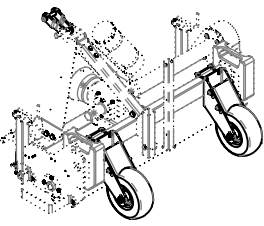
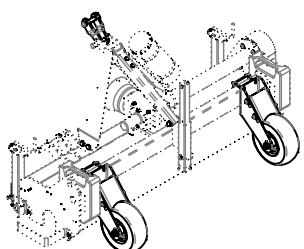
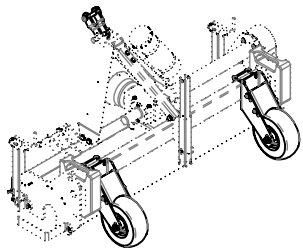
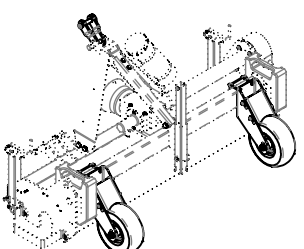
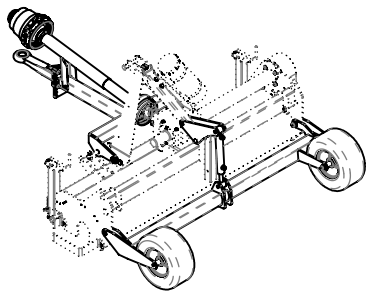


Pos.	Description	Q.ty	Code	Pos.
1	Complete collar yoke C12 (1 3/8" z.6)	1	141.022.324	1
2	Cross journal set	2	180.012.130	2
5	Outer yoke	1	151.012.003	5
11	Roll pin for outer tube	1	190.000.012	11
14	Outer tube	1	152.120.209.0730	14
15	Inner tube	1	153.120.109	15
16	Roll pin for inner tube	1	190.000.011	16
21	Inner yoke	1	151.012.002	21
30	Complete shear bolt B02 (48xM8)	1	143.220.004	30
31	Guard retaining collar for outer tube	1	180.012.380	31
37	Guard retaining collar for inner tube	1	180.012.381	37
38	Safety chains	2	180.016.790	38
40	Complete guard with instruction manual	1	142.320.009.7250	40
51	Outer circlip	1	190.000.451	51
52	Sliding sleeve collar	1	151.016.486	52
53	Spring	1	180.016.487	53
54	Fixed sleeve	1	180.016.483	54
55	Ball $\phi 1/2"$	3	190.000.078	55
71	Yoke for B02 (48xM8)	1	151.012.102	71
72	Ball $\phi 7/32"$	24	190.000.024	72
73	Push pin set 1 3/8"	1	166.026.004	73
74	Hub B02 (48xM8) - (1 3/8" z.6)	1	141.022.103	74
75	Bolt M8x45 & nut	6	165.000.508	75
76	Grease fitting M8x1	1	190.000.020	76
90	U Joint for outer tube	1	121.022.716.10	90
91	U Joint for inner tube	1	121.022.799.10	91
94	Half female guard	1	142.326.009.7250	94
95	Half male guard	1	142.327.009.7250	95
96	Half female shaft with guarding	1	123.520.028.10	96
97	Half male shaft with guarding	1	123.620.132.10	97
100	Instruction manual	1	190.000.692	100
200	Kit collar 1 3/8"	1	165.000.628	200

STD

			
			
VCU 120	VCU 150	VCU 200	VCU 240

OPTIONS

 00.34-0203			
 00.34-0151	 00.34-0151	 00.34-0151	 00.34-0151
	 BC.34-0004		


Vanmac BV
Astronaut 40
3824 MJ AMERSFOORT
the Netherlands

T +31(0)33 456 44 32
F +31(0)33 456 44 33
Info@vanmac.nl
www.vanmac.nl

Overzicht VCU
-

Overview VCU
-

Übersicht VCU
-

	
-	
Drawn AVDB 27-5-2011	Sheet 1/1
Revised - 1-1-2000	Revision -